



Supply Chain Execution

Microsoft Dynamics AX

BENEFITS SUMMARY:

- Synchronized, real-time product movement
- Improved order fulfilment and accuracy
- Reduced process inefficiencies and excess inventory
- Enhanced workload balancing and planning
- Compliance with industry standards
- Reduced transportation costs
- Positive return on investment (ROI)

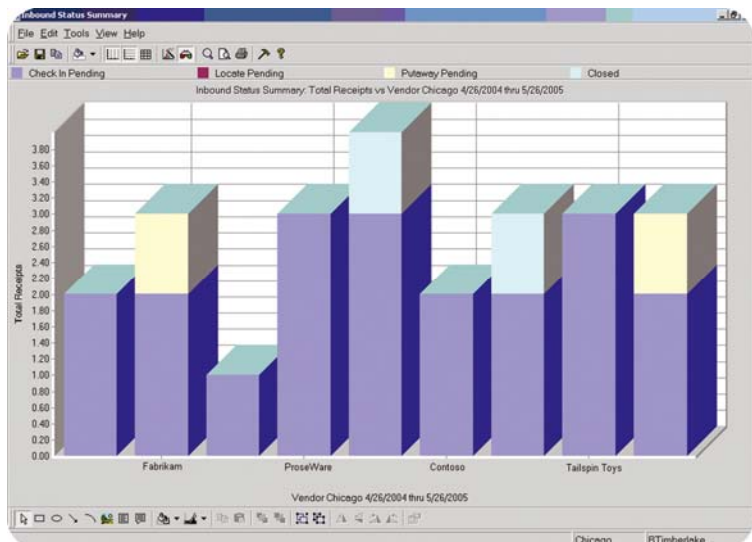
Streamline and synchronize your supply chain and distribution processes and seize global opportunities to stay ahead of the competition. Supply Chain Execution for Microsoft Dynamics™ AX helps companies overcome the challenges of ever-changing customer requirements, globalization, compliance initiatives, and multiple distribution channels. This fully integrated solution goes beyond the functionality of traditional warehouse management or business management solutions to maximize operational effectiveness, reduce costs, boost profitability, and build competitive advantage.

Synchronize real-time product movement

Enable a more efficient flow of goods by streamlining receiving and shipping processes and facilitating cross-docking or back-order shipments so that products and information move at maximum speed.

Improve order fulfilment and accuracy

Optimal product placement based on sales demand helps you increase work force efficiency, boost fulfillment rates, reduce cycle time, and eliminate user error and chargebacks. Built-in radio frequency identification (RFID) and electronic product code (EPC) technology ensures compliance with requirements of the world's leading retailers.



With graphical displays of activity summaries and various conditions such as the status of inbound goods, managers can make better, more informed decisions.

Reduce inefficient processes and excess inventory

Focus your inventory investment with improved inventory control and enhanced in-stock positions. Analyze workflows to help eliminate redundancies and manual activities throughout the warehouse.

Enhance workload balancing and planning

Help ensure your work force is performing to full potential. Track warehouse activities and measure against baseline standards to better allocate resources and reduce labor costs. With automated workflows, employees can stay connected through integrated radio frequency (RF) technology whether in the warehouse or at a desktop—helping them to prioritize work, increase productivity, and improve performance.

Enable compliance with industry standards

Meet customer and carrier requirements with product identification options, easy-to-generate load documentation, parcel manifesting support, and online bill of lading and manifest information.

Reduce transportation costs

Integrated transportation management—including standardized procurement processes, automation of carrier assignments, and tracking or tracing tools—reduces transportation costs and improves customer service.

Achieve a positive ROI

Built on proven, reliable Microsoft technologies and with global support from Microsoft Dynamics, Supply Chain Execution for Microsoft Dynamics AX can help your business take advantage of existing IT investments such as Microsoft Office System applications and the Microsoft Windows Server System™. Your company can also realize quick payback on your investment. According to a research study by Nucleus Research, Inc. conducted in 2004, 75 percent of participating Microsoft Dynamics AX [formerly known as Microsoft® Business Solutions–Axapta®] customers achieved a positive ROI within an average of only 23 months.*

*Nucleus Research, Inc. *The Real ROI from Axapta*. Research Note E116, October 2004.

FEATURES

RF/RFID support	Synchronize product movement, optimize labor resources, comply with demands of top retailers, and reduce paperwork. Use RF wireless devices or RFID systems for tasks from product receipt and put-away to inventory movement, picking, and shipment confirmation.
Integrated transportation management	Reduce costs and speed order processing by automating manual activities such as carrier assignment and delivery confirmations. Eliminate standalone parcel manifesting systems while ensuring compliance with industry standards for manifesting and bills of lading. Take advantage of high product visibility with easy-to-use track and trace tools.
Shipping load management	Build loads, schedule carriers, provide one-click confirmation for multiple orders, keep track of containers, and generate customer- and carrier-compliant shipping documentation.
Cycle counting	Help eliminate physical inventories while increasing inventory accuracy when you can perform real-time cycle counts with immediate reconciliation and discrepancy resolution. Cycle counts can be performed easily whenever picking or other activities make it convenient.
User-defined document types	Increase user control, eliminate the need for extra programming, and ease implementation and support by taking advantage of straightforward, familiar Microsoft Office Word templates that define how documents print.
Comprehensive transaction history	Enable real-time visibility into distribution processes and user actions with the ability to track system events by user, activity, date, and time.
Appointment scheduling	Manage receiving docks for optimal efficiency by scheduling appointments for expected receipts.
Putaway location optimization	Increase space utilization and eliminate human decision-making by quickly implementing best practice strategies, user-defined put-away criteria, or exception logic for guiding the selection of put-away locations.
Automated order release	Improve order fulfillment and accuracy, and automate manual activities that don't add value. Pick orders can be automatically released to the warehouse or managed according to specified fulfillment policies.
Workflow integration	Define multiple order process flows to eliminate inefficient processes while ensuring critical processes are performed.
Enhanced pick location selection	Implement selection strategies based on preconfigured best practices or user-defined criteria to increase picking productivity and eliminate human errors.
Pick/pack operational support	Help ensure order accuracy, automate manual activities, and allow for pick-to-ship container processes when you can predetermine shipping containers based on sophisticated packing algorithms, then scan and pack. Easily provide advance ship notice (ASN) information and track shipping container contents.
Replenishment	Increase storage utilization, boost picker productivity, and reduce unnecessary picker or inventory movement with optimal storage and pick location assignments.
Warehouse control center	Improve workload balancing and planning, and enable real-time decision-making through an executive dashboard that offers instant graphical representations of operational data. Track key performance indicators, easily compare actual productivity with goals, and receive alerts of floor-level exceptions.
Modular solution	From RF data collection to full warehouse management, select the solution approach that meets the needs of your business. Choose to upgrade into more functionality as your dynamic operations require it.

For more information about Supply Chain Execution for Microsoft Dynamics AX, visit: www.microsoft.com/dynamics/ax.

This document is for informational purposes only. MICROSOFT MAKES NO WARRANTIES, EXPRESS, IMPLIED, OR STATUTORY, AS TO THE INFORMATION IN THIS DOCUMENT.

© 2006 Microsoft Corporation. All rights reserved. Microsoft, Axapta, Microsoft Dynamics, the Microsoft Dynamics logo, and Windows Server System are either registered trademarks or trademarks of Microsoft Corporation in the United States and/or other countries. Microsoft Business Solutions ApS is a subsidiary of Microsoft Corporation.

Microsoft